

Detailed guidance for employers

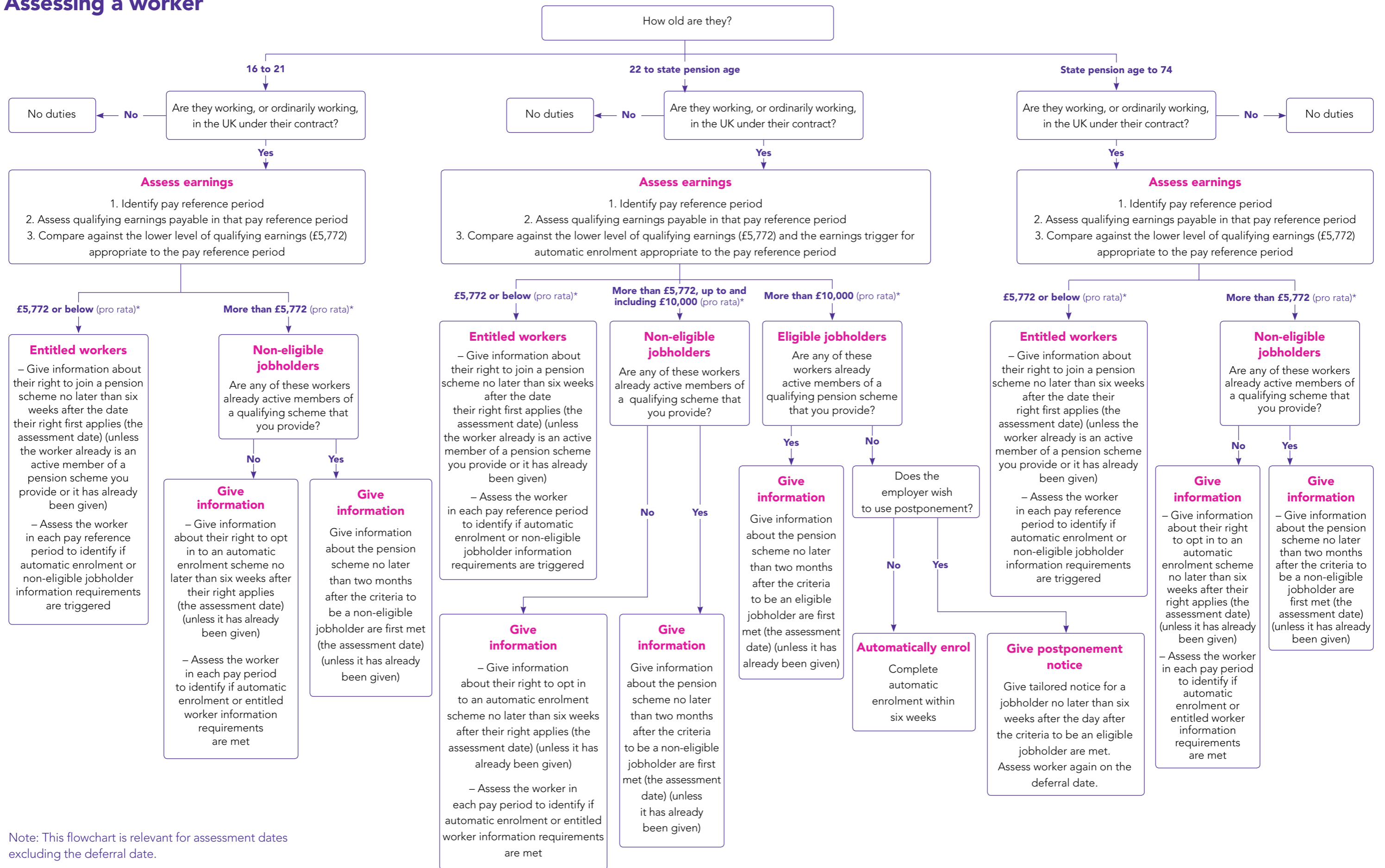
Appendix A: Assessing a worker

This document accompanies:

Detailed guidance no. 3c – Having completed the assessment

If you decide to print it out it's best viewed at A3 size, so you'll need to ensure that the A3 paper tray is selected on your printer. If your printer doesn't have an A3 tray, the document will print on A4 but you may find the text size too small to read comfortably.

Assessing a worker



Note: This flowchart is relevant for assessment dates excluding the deferral date.

You may also find [Detailed guidance no. 3a – Postponement of interest.](#)

* These figures are for the 2014-2015 tax year. These figures are reviewed annually by the Department for Work and Pensions (DWP). Where there is a change, the figures for the next tax year after they have been announced by the DWP, as well as the historic and current figures, can be found on our website at: www.tpr.gov.uk/earnings-thresholds

How to contact us

PO Box 16314
Birmingham
B23 3JP

T 0845 600 1011
F 0845 606 9970
E customersupport@autoenrol.tpr.gov.uk

www.thepensionsregulator.gov.uk
www.trusteetoolkit.com

Detailed guidance for employers no. 3c

Appendix A: Assessing a worker

© The Pensions Regulator April 2014

You can reproduce the text in this publication as long as you quote The Pensions Regulator's name and title of the publication. Please contact us if you have any questions about this publication. We can produce it in Braille, large print or on audio tape. We can also produce it in other languages.

The Pensions
Regulator